



**Beaufort County**  
**Public Works**  
**Stormwater Infrastructure**  
*Project Summary*

**Project Summary:** Major Road

**Activity:** Routine/Preventive Maintenance

**Narrative Description of Project:**

**Duration:** 7/28/16 - 8/10/16

Project improved 2,971 L.F. of drainage system. Cleaned out (1) catch basin and 2,897 L.F. of roadside ditch. Jetted (1) access pipe, (2) crossline pipes, (7) driveway pipes and 74 L.F. of roadside pipe. Hydroseeded for erosion control.

<b>2017-509 / Major Road</b>	<b>Labor Hours</b>	<b>Labor Cost</b>	<b>Equipment Cost</b>	<b>Material Cost</b>	<b>Contractor Cost</b>	<b>Indirect Labor</b>	<b>Total Cost</b>
AUDIT / Audit Project	0.5	\$11.75	\$0.00	\$0.00	\$0.00	\$6.62	\$18.36
CLPJT / Crossline Pipe - Jetted	20.0	\$445.60	\$86.80	\$72.48	\$0.00	\$286.80	\$891.68
HAUL / Hauling	40.0	\$915.40	\$333.90	\$186.62	\$0.00	\$576.80	\$2,012.72
HYDR / Hydroseeding	12.0	\$264.45	\$34.04	\$240.42	\$0.00	\$169.11	\$708.02
RSDCL / Roadside Ditch - Cleanout	140.0	\$3,256.78	\$773.86	\$126.12	\$0.00	\$1,928.70	\$6,085.46
UTLOC / Utility locates	0.5	\$12.35	\$0.00	\$0.00	\$0.00	\$6.62	\$18.97
<b>2017-509 / Major Road Sub Total</b>	<b>213.0</b>	<b>\$4,906.32</b>	<b>\$1,228.60</b>	<b>\$625.64</b>	<b>\$0.00</b>	<b>\$2,974.64</b>	<b>\$9,735.20</b>
 <b>Grand Total</b>	 <b>213.0</b>	 <b>\$4,906.32</b>	 <b>\$1,228.60</b>	 <b>\$625.64</b>	 <b>\$0.00</b>	 <b>\$2,974.64</b>	 <b>\$9,735.20</b>

Before

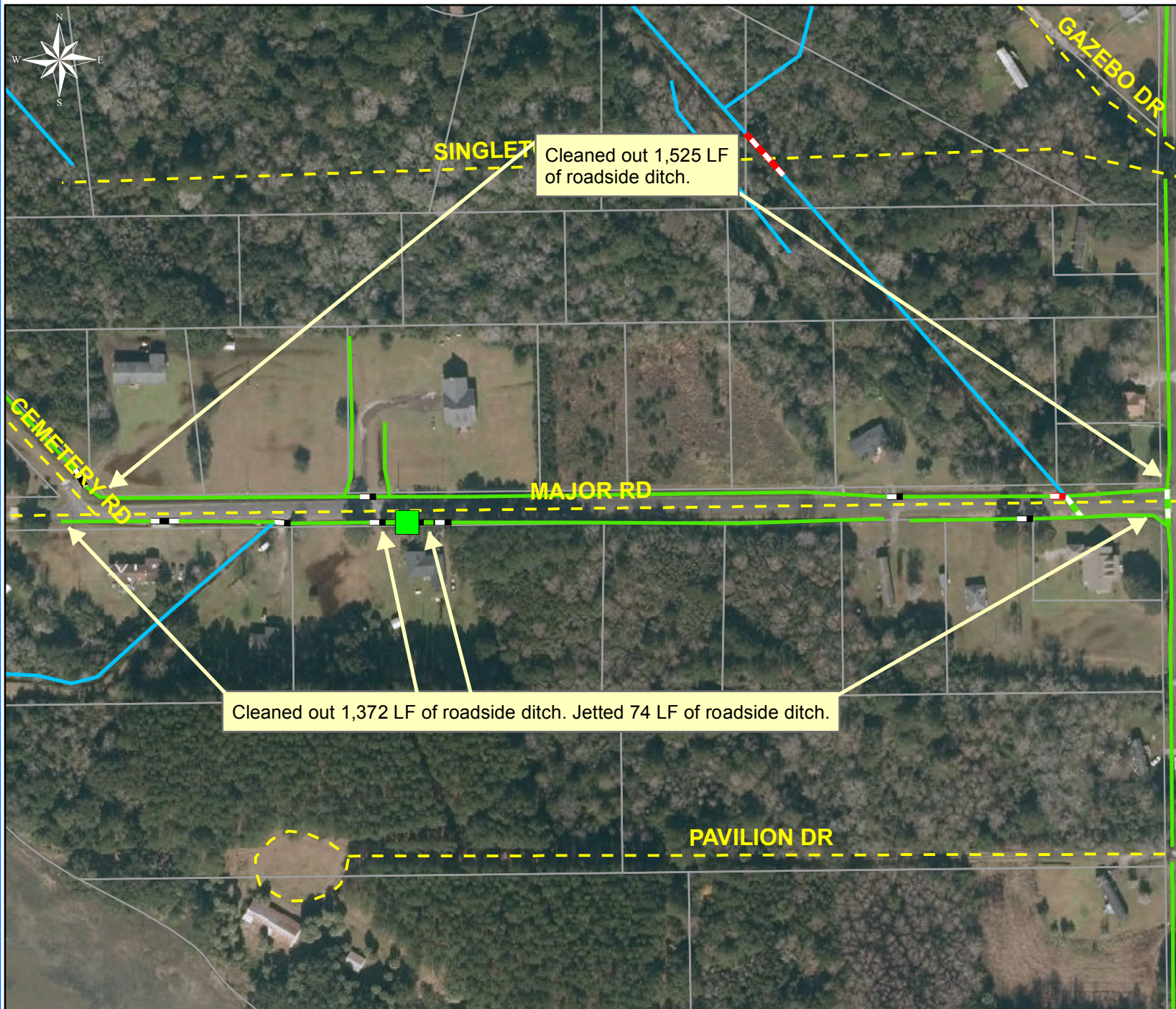


During



After





Project: Major Road Map 1

Activity: Routine/ Preventive Maintenance

Project #: 2017-509

Township/SW Dist: St. Helena Island/8

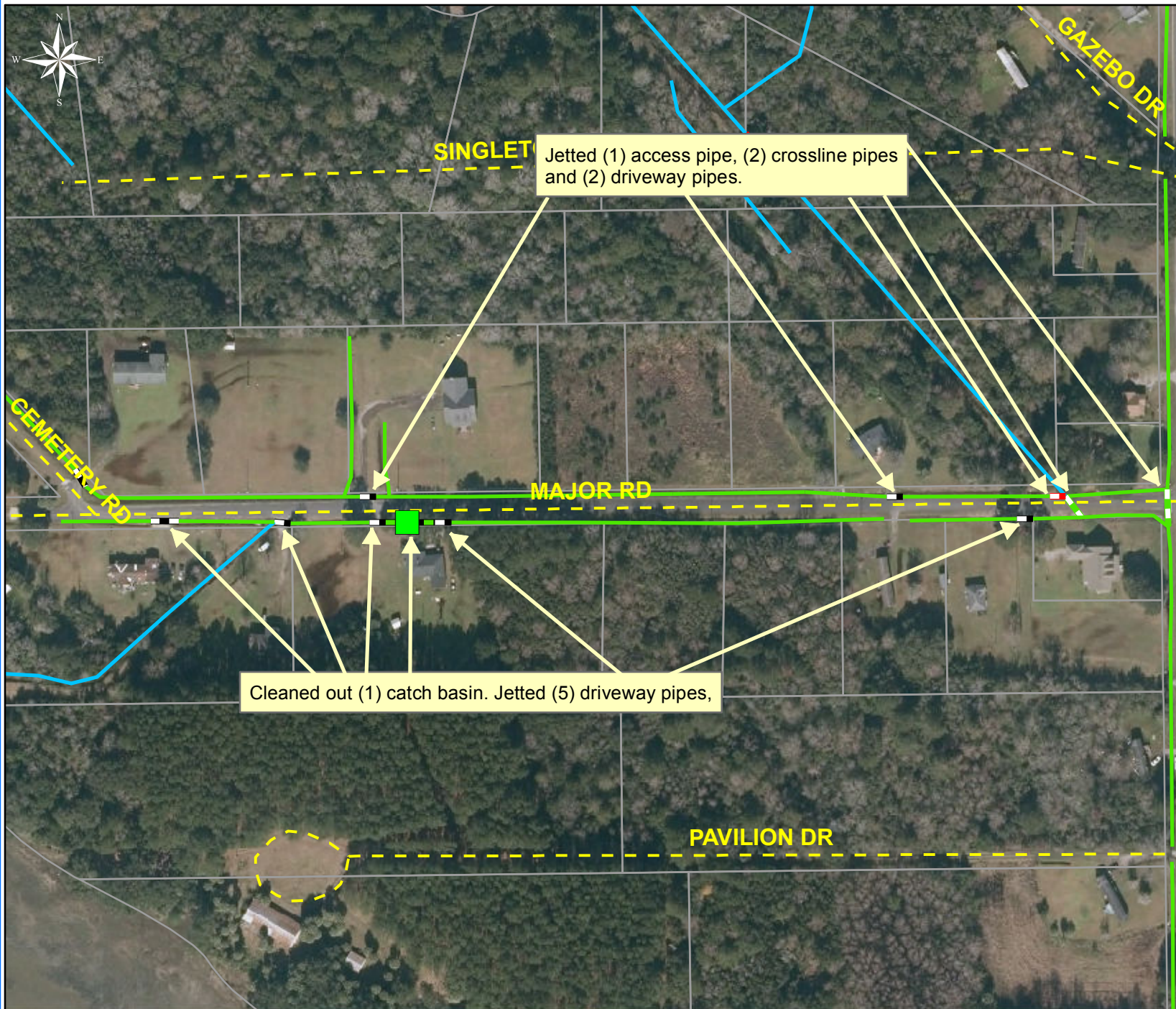
Completed: August 2016

Legend	
Drainage Type	
	Access Pipe
	Bleeder Pipe
	Channel Pipe
	Channel
	Stream
	Crossline Pipe
	Driveway Pipe
	Lateral
	Lateral Pipe
	River
	Road Pipe
	Roadside
	Roadside Pipe



1 inch = 210 feet





Project: Major Road Map 2

Activity: Routine/ Preventive Maintenance

Project #: 2017-509

Township/SW Dist: St. Helena Island/8

Completed: August 2016

Legend	
Drainage Type	
	Access Pipe
	Bleeder Pipe
	Channel Pipe
	Channel
	Stream
	Crossline Pipe
	Driveway Pipe
	Lateral
	Lateral Pipe
	River
	Road Pipe
	Roadside
	Roadside Pipe

Cleaned out (1) catch basin. Jetted (5) driveway pipes,

Jetted (1) access pipe, (2) crossline pipes and (2) driveway pipes.



1 inch = 210 feet